



Makawao Hongwanji Buddhist Temple

Makawao Hongwanji Mission P. O. Box 188 Makawao, Maui, HI. 96768 Ph: 808-572-7229 Fax: 573-1373

June 2015 e-mail: makawaohongwanji@gmail.com Website: makawaohongwanji.org Resident Minister: Reverend Sol Kalu

MAKAWAO HONGWANJI MISSION
P. O. BOX 188
Makawao, HI.—96768

Non-Profit Organization
U.S. Postage
PAID
PERMIT NO. 6
Makawao, HI 96768

Return Service Requested

Makawao Hongwanji

**Sunday, June 7th
Baccalaureate Service
Toban: Jr. YBA**

**Sunday, June 14th
Family Service
Toban: BWA**

**Sunday, June 21st
Family Service
Toban: Dharma School**

**SUNDAY, June 28th
Family Service
Toban: Kyodan**

2016 Slogan – Embrace Change: New Vision (Create Engagement)

We seek opportunities from which we create a NEW VISION, which will plan for the future and Create Engagement with our members and the community.

Call for submission;

HMMH Calendar Committee is encouraging individuals as well as groups (families, Dharma School, Jr. YBA, BWA, etc.) to submit their creative works of art for the calendar to express the five year theme and 2016 slogan:

Embrace Change: New Vision (Create Engagement)

The deadline for submission is September 9, 2015.

Please submit to Alan Kubota at alan.kubota@pbahi.org

Happy Birthday and Thank you,

Shakyamuni Buddha

By: Rev. Kodo Umezu, BCA Bishop

Published in "Wheel of Dharma" April 2015

*Shakyamuni Tathagata appears in this world
Solely to teach the oceanlike Primal Vow of Amida;
We, an ocean of beings in an evil age of five defilements,
Should entrust ourselves to the Tathagata's worlds of truth.
(Collected Works of Shinran, p. 70)*

In the words above, Shinran Shonin expressed his deep appreciation for Shakyamuni Buddha appearing in our world to expound the Primal Vow of Amida.

Venerable Tomoyasu Naito, Hongwanji *Kangaku**, recently visited the BCA for over one month. He travelled to several places and delivered many Dharma messages, including at the San Jose Betsuin for the Coast District Buddhist Women's Conference in February. Unfortunately I was unable to attend the event, but I listened to his Japanese message on YouTube.

In his message, Ven. Naito stated that we are the ones who caused Amida Tathagata to appear from the world of suchness. This truth is very difficult to accept. But imagine this: It is like a doctor going to a village where people are suffering from illness. If there is no illness, the villagers don't need a doctor. Illness causes the doctor to appear. Likewise, our illness caused Amida to appear in our world and prescribe medicine for us.

If you put an inchworm on a rim of a cup, it just goes around and around and ends up dying there. Our daily activities are like an inchworm endlessly circling around the rim of a cup; so said the 5th-century Chinese Pure Land Master T'an-luan. We are, indeed, living lives of false purpose and direction. We are driven to go around in circles in the realm of *samsara*. It is all because of a lack of wisdom.

We are lost. Because of our foolish views and ideas, we disagree with others, harm each other, and make the world a very difficult place to live in. This is what Shinran Shonin was talking about when he described us as "we, an ocean of beings in an evil age of five defilements."

We cannot see ourselves as we truly are. The reality is, we do not think we need medicine for ourselves. We think medicine is needed by other people who make our lives difficult. When a person realizes he or she needs medical attention, that person is halfway cured. The only thing left to do is find the right doctor.

After 20 years of struggle, Shinran Shonin found the right doctor and the right medicine for himself, and he encouraged others to immediately receive the same medicine. The *Nembutsu* teaching is the medicine that gives us real relief and direction. It makes us realize our foolishness and lets us live a real life with joy, humility, and appreciation.

Shakyamuni Buddha appeared in this world to guide us with true and real wisdom light. Let us all attend a Hanamatsuri Service and celebrate his birth.

Happy Hanamatsuri!

**Kangaku*: the highest academic rank within the Jodo Shinshu Hongwanji-ha

In Memoriam

Makawao Hongwanji Mission extends its deepest sympathy to families that have recently Lost a loved one:

Family of the **Late Mrs. Kay Keiko Watanabe** (70) who passed away on April 23, 2015.

Family of the **Late Mrs. Masuyo Doi** (90) who passed away on April 19, 2015.

June & July 2015 Memorial Anniversaries (Please call Temple Office to schedule your service - 572-7229)

1st Year Memorial Service 2014

June - None

1st Year Memorial Service 2014

July 01 Masae Kawabe

July 11 Moriaki Nakashima

July 26 Tokiyo Inouye

3rd Year Memorial Service 2013

June - None

3rd Year Memorial Service 2013

July - None

7th Year Memorial Service 2009

June 13 Patrick Yasuo Hamai

June 19 Edwin Yukio Nishiyama

7th Year Memorial Service 2009

July 09 Paul Kazuo Hiyakumoto

July 30 Asayo Otani

13th Year Memorial Service 2003

June 07 Kiujiro Yamaguchi

June 10 Satsuki Nancy Horiuchi

13th Year Memorial Service 2003

July 21 Mitsugu Jio

July 27 Sylvester Leialoha Inouye

17th Year Memorial Service 1999

June 05 Johnny Naoto Kusakabe

June 06 Makoto Tanaka

June 14 Stanley Akito Hedani

17th Year Memorial Service 1999

July 25 Masao Nakao

July 26 George Aketo Kayatani

25th Year Memorial Service 1991

June 30 Mitsuo Ito

25th Year Memorial Service 1991

July 04 Teruko Karimoto

July 30 Tokusaburo Enomoto

33rd Year Memorial Service 1983

June 27 Jitsuyoshi Goshi

33rd Year Memorial Service 1983

July - None

50th Year Memorial Service 1966

June - None

50th Year Memorial Service 1996

July 25 Isami Hashimoto



It is only natural to want things to stay as they are, but life is a journey and change is unavoidable. A wise person accepts this and enjoys each precious moment as fully as they can.

Donations - Makawao Hongwanji Mission can operate only because of the generous donations from many, many people. All donations are humbly received with sincere gratitude and appreciation. IF YOU DO NOT WISH TO HAVE YOUR DONATION PRINTED IN THE NEWSLETTER OR IF YOU WISH TO HAVE YOUR DONATION LISTED AS ANONYMOUS, PLEASE INDICATE SO BY ATTACHING A NOTE TO YOUR CONTRIBUTION.
Thank You!

Contributions April 16, 2015 May 16, 2015

OFUSE:

Nancy Shimoda - In memory of Harumi Kawaharada - \$100
Stella Kawaharada - In memory of Harumi Kawaharada - \$100
Amy Kawaharada - 17th year memorial service for Harumi Kawaharada - \$50
Gene Fukushima - Infant initiatory rites - \$100
Yoshiharu and Emiko Nakamura - Inurnment of Kathy Nakasone - \$150
Jean and James Ogata - In memory of Harumi Kawaharada - \$200
Carl and Yvonne Segawa - 3rd year memorial service for John Mitsuru Ebisu - \$50
Kinuye Nihei - 3rd year memorial service for John Mitsuru Ebisu - \$200
Akio Nihei - 3rd year memorial service for John Mitsuru Ebisu - \$100
Michael and Eunice Morisaki - 3rd year memorial service for John Mitsuru Ebisu - \$50
Ione Faye Isobe and Family - 7th year memorial service for Glen Haruo Isobe - \$300
Raymond and Sharon Otsubo - 7th year memorial service for Masami Otsubo - \$50
Mr. and Mrs. Alvin Chee - 3rd year memorial service for John Mitsuru Ebisu - \$20
Kenneth Okamura - In memory of Yoshiko Okamura - \$100
Allen Watanabe - Funeral service for Kay Watanabe - \$600
Mitzi Tanaka - In memory of Kay Watanabe - \$30
Lydia Furumoto - In memory of Kay Watanabe - \$20
Shizuko Kawabe and Family - 7th year memorial service for Teruko Kawabe - \$100
Jerry and Sharon Fujioka - 7th year memorial service for Teruko Kawabe - \$200
Barbara Doi - Funeral service for Masuyo Doi - \$400

DONATIONS:

Sabi Inderkum and Lauree Asato - In memory of Suzanne Hirota - \$100
Daniel Watanabe - In memory of Hisae Edith Watanabe - \$200
George and Alice Fukushima - In memory Tadashi Fukushima - \$50
Karen Hiromoto - In memory of Bryan Hiromoto - \$100
Sueno Saito - In memory of parents, Mr. & Mrs. Murakami - \$25
Charlene and Leslie Shibuya - \$250
Dexter and Glynis Okamura - Use of social hall - \$100
Toshie Masuoka - Newsletter - \$25
Anonymous - Esshinni/Kakushinni donation - \$40
Allan and Janie Karimoto - \$300
Jean Wakashige - In memory of Bryan Hiromoto - \$100
Claire Kusakabe - 17th year memorial for Johnny Naoto Kusakabe - \$100

NOKOTSUDO:

Robin and Lynn Tengan - In memory of Kathy Nakasone - \$50
Gladys Ushijima - \$30
Yvonne Kishi - \$25
Gary Sibonga - In memory of Kathy Nakasone - \$25
Yvonne Kishi - \$25
Eileen Sato - \$25
Fujiko Tanaka - \$60



PRESIDENT'S MESSAGE



Reverend Sol Kalu, our minister, is resigning from Hawaii Kyodan for health reasons. His last day at Makawao Hongwanji Mission will be June 15, 2015. Rev. Kalu, thank you for your service at our temple and our community. We do hope that you will be back on you feet soon. Take care and let us know how you are doing.

I was walking around Walmart the other day and guess what? I finally found the bucket that I was looking for. I thought that it looked a little pail but sure enough, it was a small bucket. This was the last bucket that I needed to complete my bucket list. It seems that my bucket list is a lot different from other people's bucket lists. I just think that the other people are jealous. Oh well, go figure.

You know, it seems that a lot of people have a poor understanding of math. Everywhere I go, I hear people say "Well, you do the math!". This is really sad because we are talking mathematics and not Algebra or Trigonometry. Maybe this is the reason why we are about the only country in the world that don't use the metric system. Oh well, go figure.

BAZAAR DONATIONS/HELP NEEDED

Makawao Hongwanji's Garage Sale/Bazaar will be held on July 4-5, 2015. The Garage Sale will be on on July 4 and 5, but the **BAZAAR will be on Sunday, July 5 only**. Bazaar items for sale will include chow fun, nishime, fruits and vegetables, sweet potato manju, sushi, pickled peaches, sanbaizuke, spam musubi, biscuits, jams and jellies, and flowers.

All donations are gratefully accepted and appreciated, but the following items are especially needed: jams and jellies, fruits and vegetables, and flowers.

Any help with your time and manpower will also be appreciated. As bazaar time gets closer, we will have a better idea of exactly what needs to be done (cut vegetables for chow fun and nishime, make manju, etc.) and the times for helping.

Please call Diane Kosaka at 572-8835 or the temple office at 572-7229 if you are able to help

Time to unclutter!

Planning to start your Spring cleaning? Don't forget, Makawao Hongwanji's Fourth of July Garage Sale is just around the corner and we are happily accepting donations for the Fourth of July Garage Sale. This is a great chance to clean out those closets, garage storage, and other secret storage areas, and, help keep your home clutter free! Previously enjoyed clothing, furniture, and household items in usable condition will be lovingly recycled. All items may be dropped off in the small garage in back of the Nokotsudo (columbarium). For security reasons, please inform the office so that items can be put away later in a secure place. For larger furniture, please check with the office for placement.

As a reminder, we are not able to accept the following:

- *Large appliances * Lawnmowers *Computers and printers
- *Big TVs (over 20 inches) *Baby cribs *strollers and car seats (due to new safety regulations)

GARAGE SALE WORK SCHEDULE

<u>Friday June 26,</u>	2 -6 pm – Set up the tables, move items to the hall
<u>Saturday June 27,</u>	8 a.m. – 4p.m. - Unloading more stuff and opening boxes
<u>Sunday June 28 -</u>	10 a.m. (after church service) – Whoever can stay and help
<u>Mon – Thursday, June 29 – July 2:</u>	8am – 8 pm.
<u>Friday July 3,</u>	8am – 11am.
<u>Saturday July 4th – Garage Sale Day</u>	7a.m. – 2p.m.
	Parking help 5:30 a.m.
<u>Sunday July 5th – Bazaar & Garage Sale</u>	7a.m. – 12 noon
	Parking Help 5:30 a.m.
	Clean Up 12:00 p.m.

Honpa Hongwanji Mission of Hawaii

HEADQUARTERS UPDATE

1727 Pali Highway, Honolulu, Hawaii 96813

Phone: (808) 522-9200 Fax: (808) 522-9209

Web: www.hongwanjihawaii.com Email: hqs@honpahi.org

MAY 2015

REQUEST FOR COMPASSIONATE AID FOR NEPAL

April 25, 2015, a Saturday in the mountainous Himalayan nation of Nepal, started like any other day, but it will be remembered with trauma and great sadness because of so many lost and injured lives, and the destruction of so much property including homes and centuries-old shrines and temples. At last count, the number of people killed by the massive earthquake that struck Nepal has surpassed 5,000 and according to some reports, over a million children are in need of aid. Many people are living outdoors for fear of entering weakened buildings and homes which may collapse due to aftershocks, but supplies are limited and people are struggling day to day. Those who are uninjured and able to help are helping those less fortunate.

In a Facebook message from Kathmandu Hongwanji Buddhist Temple, Jodo Shin Buddhist Minister Rev. Sonam Bhutia reports, *"We are fortunate that we lost no lives at the Kathmandu Hongwanji, however, as part of the Nepalese community we are saddened by the death and destruction that has come to our wonderful city."* He shares the destruction, despair and death left by the quake and reports that they are doing their best, as are others, to help those in need. He makes a sincere request for aid (funds), *"...with reverence and respect to all who would like to help, we hope for the world to respond to Nepal's dire needs with heartfelt aid to save our community. Please help Nepal and the Kathmandu community in our time of suffering. The funds raised will be used to help all without regards to religion or ethnicity, since we are all part of the world community and feel strongly that we must help each other in times of need."*

The Honpa Hongwanji Mission of Hawaii Committee on Social Concerns has decided to make an emergency contribution for immediate aid and also embark on a special Nepal disaster relief drive called "Aloha for Nepal." All funds raised will go to Kathmandu Hongwanji and to the disaster relief organization, Mercy Corps.

On behalf of our State President Mr. Pieper Toyama, Committee on Social Concerns Chair Rev. Blayne Higa, and the Social Concerns Committee and myself, I would like to humbly ask our Members, Supporters and Friends for your compassionate help to lend aid to the people of Nepal. As Buddhists, we have a special connection with Nepal as it is the country of Sakyamuni Buddha's birth, but more importantly, let us help all our neighbors in Nepal in their time of need and immense suffering.

Namo Amida Butsu, Entrusting in the Buddha of Immeasurable Life and Infinite Light. In Gassho,
Rev. Eric Matsumoto, Bishop

Donations can be made in the following ways:

Through your local temple. Make checks payable to **Your Temple** and designate **ALOHA FOR NEPAL** in the memo section. All donations will be forwarded to Hawaii Kyodan Headquarters. Online through the Honpa Hongwanji Mission of Hawaii website. Visit www.hongwanjihawaii.com and make a secure credit or debit card donation via Paypal.

Please send in your donations by Monday, June 1, 2015.

JINJI – PERSONNEL

Rev. David Fujimoto, the Resident Minister of Puna Hongwanji Mission as well as the Overseer Minister of the Naalehu and Pahala Hongwanji Mission, will be assigned to Mililani Hongwanji Mission as its Resident Minister as of July 1, 2015.

Rev. Sol Kalu, the Resident Minister of Makawao Hongwanji Mission, will resign from Honpa Hongwanji Mission of Hawaii as of June 15, 2015.

Mr. Jacob Chang, the Youth Specialist in the Office of Buddhist Education, will resign from Honpa Hongwanji Mission of Hawaii as of June 5, 2015.

LIVING TREASURES OF HAWAII

The purpose of the Living Treasures of Hawai'i™ is to recognize and honor individuals who have demonstrated excellence and high standards of achievement in their particular field(s) of endeavor, and through their continuous growth, learning and sharing, have made significant contributions towards enriching our society.

CRITERIA FOR SELECTION

1. Demonstrates continuous growth and learning in one's area of strength.
2. Shares consistently one's knowledge and understanding with others in particular field(s) of endeavor.
3. Makes significant contributions towards enhancing society resulting in a more harmonious and compassionate society for all.

NOMINATION PROCEDURE

An organization or person may nominate a candidate for this recognition by submitting a nomination form with information on the nominee. The nomination form is available at the Honpa Hongwanji Mission of Hawaii Headquarters Office located at 1727 Pali Highway, Honolulu, Hawaii 96813 or on our website at www.hongwanjihawaii.com. Completed nominations may be submitted in the following manner:

- By mail.
- By fax – (808) 522-9209.
- By email – admin@honpahi.org
- Dropped off during office hours.

The completed nomination must be received by the Living Treasures Committee no later than **August 1st**. Presentation is made in February of the following year. For additional information, please call our office at (808) 522-9200.

HONPA HONGWANJI JUDO TOURNAMENT

The 56th Annual Honpa Hongwanji Judo Federation State championship Tournament will be held on September 5 and 6, 2015 on Maui. This year the tournament is hosted by Makawao Hongwanji Judo Club. This will be their first tournament as host since organizing the judo club a few years ago. The tournament site will be at King Kekaulike High School in Pukalani. The opening ceremony will start at 11:00am at the tournament site.

There will be nine Hongwanji Judo clubs participating; Aiea Hongwanji Mission, Honpa Hongwanji Hawaii Betsuin, Honpa Hongwanji Hilo Betsuin, Kona Hongwanji Mission, Makawao Hongwanji Mission, Mililani Hongwanji Mission, Pearl City Hongwanji Mission, Puna Hongwanji Mission, and Wailuku Hongwanji Mission.

MHM JUDO - by Claude Moreau

Aloha, just a short note for MHM Judo Club. Judo classes are being held in the Social Hall on Mondays and Thursdays in the evening. Small kids classes are from 6pm to 7:15pm. Bigger kids to adult classes are from 7:15pm to 8:45pm. Contacts: Claude Moreau at 833-4145; Duane Yoshizu at 268-1250.

PICKLED PEACH PROJECT UPDATE ...By Cal



Since Saturday, April 28 and throughout the month of May, Makawao Hongwanji's pickled peach fundraising project has been moving along wonderfully. Each Saturday, at least 20 members and friends have been coming out to help pick the peaches in our "orchard" next door to our temple grounds. We also have people picking and bringing in peaches from the Nishida, Fukuda, and Nakamura farms in Kula. Part of the crew washes the peaches and soaks them in 32 gallon barrels of brine for 3 days.

On Tuesdays after the picking and washing, the peaches are blanched, sorted, and set in pickling syrup in 5 gallon buckets. We have been very fortunate to have at least 10 volunteers doing the Tuesday process.

Then a week later on Mondays, the peaches are graded again and set into the final gallon size containers to set for at least 3 weeks until they are ready for sale. We again have about 12 volunteers doing the final packing.

Of course our syrup crew made up of 4 to 6 men cook up the many gallons of syrup and that is a process that has taken the mornings on Wednesdays and Thursdays.

Then there is the dehydrating peach crew of ladies who come out to pit the soft peaches which have been sorted out from the regular peaches for dehydrating. A core crew takes care of setting the dehydrators in the kitchen to produce our delicious dried pickled peaches.

As of May 20, 25 barrels of peaches have been picked, washed, and sorted; and we have over 314 gallons of peaches in stock and in the pickling process. This is more than the total amount we had produced in 2014, and we are not even half way through the season!!!

The first week's batch has been pickling for over 3 weeks and some have already been distributed to a store who sells them retail.

The temple office is taking orders and the first available pick up date will be in mid June. This year, we are having to *purchase* the gallon containers so the price is \$35 per gallon. Dried pickled peaches will also be going on sale but may be limited based on how fast they can be produced. Price on dried pickled peaches is \$4 per 4oz. bag. Call the temple office for more information or for placing your order.

We really appreciate all those volunteers who are helping make this year's pickled peach fundraising project a great success. THANK YOU ALL!!!!



UPCOMING ACTIVITIES

June 7 Dharma School End of Year Awards and Baccalaureate Service

June 26 - July 3 Preparation for Bazaar
Call office for the schedule

July 4-5 Garage Sale and Bazaar - Call office for the help schedule

July 19 Summer General Clean-up, 8:00 am



Maui Buddhist Council has announced its 2015 Obon Schedule.

<u>Date</u>	<u>Day</u>	<u>Temple</u>	<u>Service</u>	<u>Dance</u>
June 6	Sat.	Lahaina Shingon	6:30 p.m.	7:30 p.m.
June 13	Sat.	Puunene Nichiren	7:00 p.m.	8:00 p.m.
June 19	Fri.	Wailuku Jodo	7:00 p.m.	8:00 p.m.
June 27	Sat.	Wailuku Shingon	6:30 p.m.	8:00 p.m.
July 3	Fri.	Lahaina Jodo	6:30 p.m.	8:00 p.m.
July 10-11	Fri/Sat	Paia Montokuji	6:00 p.m.	8:00 p.m.
July 17-18	Fri/Sat	Kahului Hongwanji	6:30 p.m.	7:30 p.m.
July 24-25	Fri/Sat	Makawao Hongwanji	6:30 p.m.	7:30 p.m.
July 31-Aug.1	Fri/Sat	Wailuku Hongwanji	6:30 p.m.	8:00 p.m.
Aug. 7-8	Fri/Sat	Lahaina Hongwanji	6:30 p.m.	7:30 p.m.
Aug. 15	Sat.	Kahului Jodo	6:30 p.m.	8:00 p.m.
Aug. 22	Sat.	Paia Rinzai Zen	6:00 p.m.	7:00 p.m.
Aug. 29	Sat.	Kula Shofukuji	6:30 p.m.	7:30 p.m.
Aug. 28	Fri.	Kahului Hale Makua	6:30 p.m.	
Sept. 4	Fri.	Wailuku Hale Makua	6:30 p.m.	

Get Ready, Set, PLANT!

Before we know it, the 4th of July Bazaar and Garage Sale will be here. Plant lovers, if you haven't started your keiki plants yet, now is the time to start the race. Get ready, set and start planting! Remember that the community enjoys the variety of plants so every single plant is valued. An old plant that you are tired of could be someone's treasure. It could be just the plant someone was searching for.

We have had quite a rainy season and it still rains off and on Upcountry. It's a good time to relax in your garden and enjoy the process of seeing a plant grow into something that will keep our environment beautiful. Ornamental trees, fruit trees, flowers, vegetables, herbs, succulents, ferns, orchids, bromeliads and plants of all kinds are appreciated. The love of plants will be transferred to the new owners and Maui will continue to be a beautiful place to live. See you at the Plant Sale! Questions? Contact Calvin or Sharon Higuichi at 572-9343.

TROOP 18 NEWS

By: Bryson Uchima

The Troop 18 Boy Scouts had a community service project at the Lahaina Jodo Mission on April 25-26, 2015. We raked and weeded the graveyard and church grounds, then had lots of fun camping there overnight!

On May 2, 2015, Troop 18 had a Car Wash fundraiser at the Ceramic Tile Plus! It turned out to be a nice sunny day which was perfect for our cash wash! Lots of dirty cars came through and drove off squeaky clean! Most of the customers were really nice and gave extra donations to support the Boy Scouts!

Two Cub Scouts from Pack 18, TJ Barrett and Nikolaus Engelmann, "crossed over" to become new Boy Scouts with Troop 18 during their Arrow of Light ceremony that was held on May 17, 2015. Welcome to our Troop, TJ and Nikolaus!

Troop 18 will be leading the ceremony at the Memorial Day Flag Placement at the Makawao Veterans Cemetery on Saturday, May 23, 2015. We will also go to St. Joseph Church to place more flags. After that, we will be camping overnight at the Thomas' and working on an Orienteering merit badge (Map and Compass).



MHM Boy Scouts and Cub Scouts You are the BEST!

Boy Scouts and Cub Scouts are known to do their best, help others at all times, keep physically strong and mentally alert. How thankful we are to have Troop 18 affiliated with Makawao Hongwanji Mission.

There are times our Troop 18 Scouts and Cub Scouts are prepared to lend a helping hand. Many times it is more than a hand that is needed. Sometimes it is lifting tables, setting up planks of wood, carrying heavy boxes, using gardening tools as well as sweeping and mopping floors. Above all, these scouts perform these duties in a courteous, kind, cheerful and friendly manner. Most often their smiles overwhelm the people they are helping with gratitude and thankfulness.

At the recent Hanamatsuri celebration on April 5, 2015, the Scouts were commended by the temples in attendance. It was mentioned, "The Scouts provided much appreciated help. First Aid by Scouts was administered for possible dehydration and heat exhaustion. Their help in setting up and cleaning up was done efficiently. Thank you very much, Troop 18."

Troop 18 Scouts, you are valued and appreciated for all you do. Merci, Salamat, Arigato, Mahalo, Kam Ouen!

By Karen Ishizu

MAKAWAO HONGWANJI PRESCHOOL Graduating Class of 2015

Makawao Hongwanji Preschool opened its doors 31 years ago, under the direction of Director/Teacher Lei. Along with Lei, Teacher Iris and Teacher Carolyn, who retired last year, nurtured and prepared 30 classes of graduates for a future of education and adulthood. Last year, Teacher Jody joined the staff. Also on staff today are Teacher Devin and Teacher Tricia. We are truly blessed to have such caring teachers. Thank you, teachers!



Teacher Lei



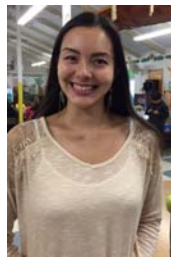
Teacher Iris



Teacher Jody



Teacher Tricia



Teacher Devin



30th Graduating Class of Makawao Hongwanji Preschool.



Returning Students.

PARENT'S DAY AT MAKAWAO HONGWANJI

HAPPY PARENT'S DAY! May 10th was a special day to celebrate "Mothers" and we at Makawao Hongwanji celebrated "Fathers", too. After all, we wouldn't have Mothers without Fathers OR Fathers without Mothers. So, we said THANK YOU to our parents.

Thank you to Megan and Lorin Kosaka (parents for 5 years, 10 months) who shared what they learned from their parents and how they are raising their son and daughters. Keeping teachings positive is important. Instead of "Don't hit your sister!" how about "What can you hit instead?" We can all try Lorin's method of keeping calm by breathing slowly several times. Better yet, practice the slow breathing just to feel calm and centered, even if you're not angry.

Thank you to everybody who brought some POTLUCK LUNCH. *Did you really learn to make all those different things from your parents?* Sushi, namasu, shiso rice, taco salad, noodles, chicken, roast beef and onions, kombu maki, fish patty, mochi, brownies, jello, and much, much more. Your parents would be proud to see you're carrying on the "cooking" tradition.

Thank you to Dharma School for sharing some treats with everyone, made by Stephanie Thomas and family, to Marilyn Morikawa for gathering everybody to play a sharing about your parents and about your-self activity, and Sharon Nagoshi for being Dharma School director and Sunday MC.

DO YOU KNOW THE DIFFERENCE BETWEEN
GAUTAMA (Shakyamuni) BUDDHA AND AMIDA BUDDHA? And their images and statues?

Images of Gautama (Shakyamuni) Buddha are seated. Gautama (Shakyamuni) Buddha was a real person.
Images of Amida Buddha are standing. Amida Buddha is an eternal being.



Historical Buddha

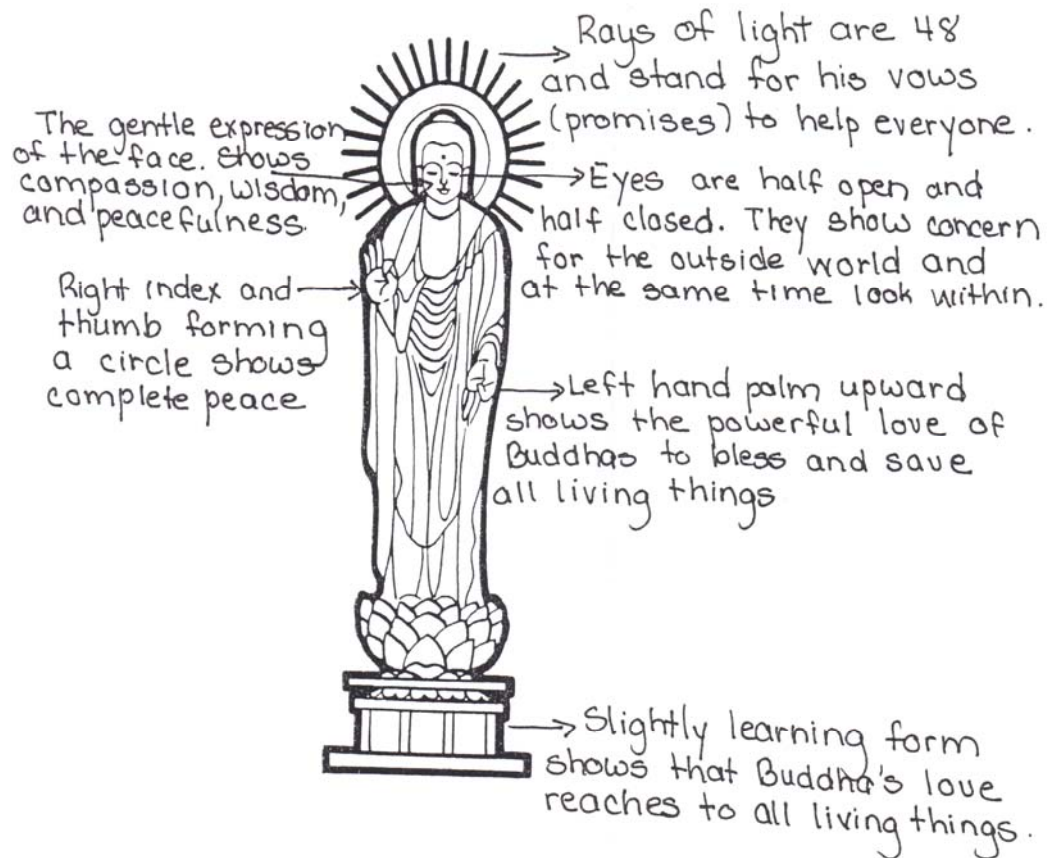
born and died in this world
lived as a man in this world
enlightened in this world
because he lived as a man, he had
human limitations such as illness and physical
weakness



Eternal Buddha

eternal being
did not live as a man in this world
perfect being
no limitation as such

OUR GREATEST TEACHER WHO TAUGHT US
ABOUT AMIDA



ANNOUNCEMENT OF NEW DHARMA CLASS FOR JUNE 2015

New Dharma Class: Three session class, "How Basic Can You Get? – Buddhism for Beginners" is scheduled for June and July on Saturday mornings from 10:00 – 11:30am (June 20, 27 & July 11) at Kahului Hongwanji Mission. Classes will be held in the main Temple. This class will offer participants the opportunity to learn or review the basic concepts of Buddhism, which are essential for anyone who considers themselves to be Buddhist or who is interested in learning about the Buddha's teachings. Topics covered will be the story of Shakyamuni Buddha, the Four Noble Truths, Interdependence, Pure Land Teachings, and much more. Practical topics such as the meaning of the altar, incense offering, chanting, and others will be discussed. As always, our classes emphasize questions and open discussion. Participants are asked to register for the three-class session; the suggested donation is \$10.00. Everyone is WELCOME!

Announcement for New Event at Kahului Hongwanji

A weekly **Meditation Service** will be held most Friday evenings from 6:00 – 6:45pm in the Main Temple **beginning June 12**. This service is a time for quiet reflection and to rediscover of our inner self, which gets lost amid all the stress and turmoil of daily life. Beginning with a meditative chanting of a Buddhist sutra, the service consists of quiet sitting based on calming the mind through awareness of the breath and through aspirations for the happiness of all beings. The service concludes with a simple walking meditation, which slows us down and allows us to rediscover the joy of the present moment. Everyone is welcome so **Please Join Us!**

JUNE - JULY 2015

Sun	Mon	Tue	Wed	Thu	Fri	Sat
	1 6:00/7:15 pm Judo	2 8:30 am Fitness Prog	3	4 8:30 am Fitness Prog 6:00/7:15pm Judo	5	6 7:00 am Nokotsudo - Cleaning 8:30 am Fitness Prog
7 9:00 am Dharma School End of year Awards Jr.YBA	8 5:30 pm Preschool Board Mtg. 6:00/7:15 pm Judo	9 8:30 am Fitness Prog	10 7:00 pm Council Mtg	11 8:30 am Fitness Prog 6:00/7:15pm Judo	12	13 7:00 am Clean-Up Haiku, Paia, Haliimaile, Wailuku Kahului 8:30 am Fitness Prog
14 9:00 am Family Service BWA	15 Sensei's Last Day 8:30 am Sr. Program 6:00/7:15pm Judo	16 8:30 am Fitness Prog	17	18 8:30 am Fitness Prog 6:00/7:15pm Judo	19	20 7:00 am Nokotsudo - Cleaning 8:30 am Fitness Prog
21 9:00 am Family Service Dharma School	22 6:00/7:15pm Judo	23 8:30 am Fitness Prog	24	25 8:30 am Fitness Prog 6:00/7:15pm Judo	26 GARAGE SALE Set up work day 2 pm ~ 6 pm	27 7:00 am Clean-Up Haiku, Paia, Haliimaile, Wailuku Kahului 8:30 am Fitness Pro Garage Sale Work Day 8 am ~ 4 pm
28 9:00 am Family Service Kyodan Garage Sale Work Day 10 am ~	29 Garage Sale Work Day ←	30 8:30 am Fitness Prog		Garage Sale Work Day < 6/29 ~ 7/2 > 8 am ~ 8 pm	Organize & Pricing	

Sun	Mon	Tue	Wed	Thu	Fri	Sat
			1	2 8:30 am Fitness Prog 6:00/7:15pm Judo	3 Garage Sale Work Day → 8 am ~ 11 am	4 7 am ~ 2 pm GARAGE SALE
5 7 am ~ 12 noon GARAGE SALE & BAZAAR	6 6:00/7:15 pm Judo	7 8:30 am Fitness Prog	8 7:00 pm Council Mtg	9 8:30 am Fitness Prog 6:00/7:15pm Judo	10	11 7:00 am Clean-Up Pukalani 8:30 am Fitness Prog
12 9:00 am Family Service BWA	13 8:30 am Sr. Program 6:00/7:15pm Judo	14 8:30 am Fitness Prog	15	16 8:30 am Fitness Prog 6:00/7:15pm Judo	17	18 7:00 am Nokotsudo - Cleaning 8:30 am Fitness Prog
19 8:00 am General Clean-Up	20 6:00/7:15pm Judo	21 8:30 am Fitness Prog	22	23 8:30 am Fitness Prog 6:00/7:15pm Judo	24 OBON	25 OBON 7:00 am Clean-Up Pukalani 8:30 am Fitness Prog
16 9:00 am Family Service Kyodan	27 6:00/7:15pm Judo	28 8:30 am Fitness Prog	29	30 8:30 am Fitness Prog 6:00/7:15pm Judo	31	